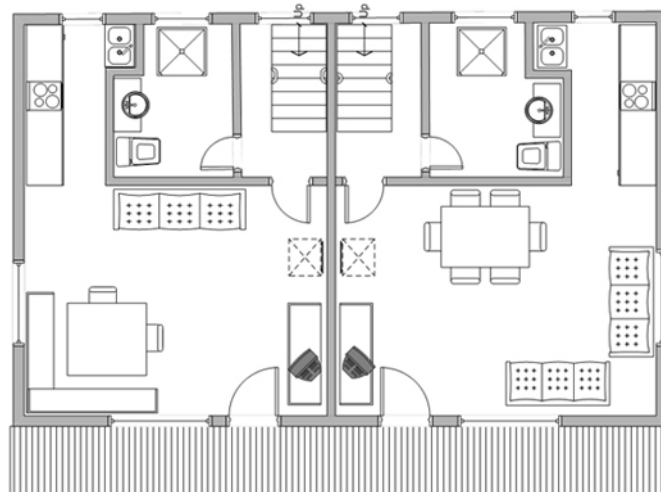


Ground floor floorplan

Both sides have their own entrance with large hallways with seating and ample storage space. There are two bedrooms and a bathroom on each side.

Bedrooms:

- Bedroom 1 - Twin Beds
- Bedroom 2 - Twin Beds
- Bedroom 3 - Double Bed
- Bedroom 4 - Bunk Beds + Single Bed



First floor floorplan

Chalet Maria is split into two almost identical halves, both of which have;

Living Rooms: Both living rooms have access to the balcony and un-obscured views across the valley. They also have wood burning stoves (wood supplied), double sofa beds, dining table, cable TV and DVD players.

Kitchens: Two fully fitted and well equipped kitchens including oven, hob, microwave, fridge/freezer, all cooking equipment (pots, pans, and utensils), kettle, coffee filter and toaster.

Bathrooms: Both have a large family bathroom, with shower, WC and basin.

Prices

| Arrival | Departure | Half Chalet | Full Chalet |
|--------------------|--------------------|-------------|-------------|
| 10th April 2012 | 16th December 2012 | € 500 | € 950 |
| 16th December 2012 | 23rd December 2012 | | € 1,650 |
| 23rd December 2012 | 6th January 2013 | | € 2,450 |
| 6th January 2013 | 27th January 2013 | | € 1,650 |
| 27th January 2013 | 17th February 2013 | | € 2,050 |
| 17th February 2013 | 10th March 2013 | | € 2,450 |
| 10th March 2013 | 7th April 2013 | | € 1,650 |

Prices are in euros and are based on 1 week rental including all fuel / heating / electricity / cleaning etc. Weekends and shorter / longer stays are available outside the ski season. The tourist tax of Eur 28 per chalet is included.

Booking information

Once you have confirmed your booking you are required to pay a 30% deposit within 5 days. You will then need to pay the balance no later than 8 weeks before the start of your stay. If you need to cancel the booking, we will endeavour to re-let the period. If we do we will return your deposit less an administration charge.

All of the booking process is done via our management company Haus Salzburg. Upon arrival make your way to Haus Salzburg in Hinterthal, where you can collect the keys to the Chalet from 4pm. There is parking for up to three cars outside the chalet. The road to the chalet is cleared frequently by the local farmer, but we strongly advise guests to take snow chains, just in case.

Check out on the Sunday is 10am so we have enough time to clean the chalet for the next arrivals, however, if you are going to ski on the second Sunday, you are welcome to store bags and get changed at Haus Salzburg through the day.

What's included

All linen is included but not bath towels. The apartment will be cleaned prior to arrival and on departure. We would ask guests to leave the kitchen dishes & utensils cleaned and the fridge/freezer empty.

We would advise you to rent a car so you can sample some of the excellent local restaurants and bars as well as for supermarket trips (the nearest is about 7 mins away in Maria alm). However if you are too tired to move off the hill, there is a hotel/bar/restaurant just 3 mins walk away that is very cosy and serves great food. We would ask guests not to smoke in the chalet.